

RYC Hollandia

MAGIC MARINE MELGES 24 EUROPEAN CHAMPIONSHIP

15 - 22 August 2013

Medemblik, the Netherlands

NOTICE OF RACE

The Magic Marine Melges 24 European Championship will be organised by the Royal Yacht Club Hollandia, in co-operation with the Dutch Melges 24 Class Association and the International Melges 24 Class Association.

1 RULES

- 1.1 The regatta will be governed by the rules as defined in *The Racing Rules of Sailing*.
- 1.2 No national prescriptions will apply.
- 1.3 The Equipment Rules of Sailing will apply.
- 1.4 The following rules will be changed:
 - 1.4.1 All competitors shall wear personal flotation devices while racing, except for brief periods while changing or adjusting clothing. Wet suits and dry suits are not personal flotation devices. This changes rule 40.
 - 1.4.2 The Race Committee (RC) will use VHF radio to communicate to the fleet. Failure to make this broadcast or failure to hear the broadcast shall not constitute grounds for granting redress. This changes rule 62.1.
 - 1.4.3 Appendix P shall apply, and will be changed as described in NOR 12.2.
 - 1.4.4 Part 5, Section B of *The Racing Rules of Sailing*, as well as rules 44.1 and 63.1 will be changed in the Sailing Instructions to permit protest arbitration.
- 1.5 If there is a conflict between languages the English text will take precedence.

2 ADVERTISING

- 2.1 Advertising will conform to the current ISAF Regulation 20 and the Class Rules.
- 2.2 Boats may be required to display identification numbers and sponsors advertising for the duration of the event in accordance with ISAF Regulation 20. These items will be supplied free of charge by the Organizing Authority (OA) at registration.

3 ELIGIBILITY AND ENTRY

- 3.1 The regatta is open to all boats of the Melges 24 class that meet the obligations of the Class Rules and their National Authority, in the case that a National Authority exists.

- 3.2 Competitors shall comply with the ISAF Eligibility Code (ISAF Regulation 19) which requires that all competitors (helmspersons and all other crew) shall be members of their Member National Authority or one of its affiliated organizations. The membership details shall be stated when entering. Proof of membership shall be presented at registration.
- 3.2 Eligible boats may enter by completing the entry form / online registration and sending it, together with the required fee, to The Dutch Melges 24 Class Association **by 16 July 2013**.
- 3.3 Late entries will be accepted subject to a 50% surcharge.
- 3.4 No entries will be accepted after 16 July 2013.
- 3.5 The OA will acknowledge complete entries upon receipt via email and post on the official event web site at www.melges24europeans13.com
- 3.6 Only boats that have completed all registration requirements will be allowed to compete.

4. CORINTHIAN CLASSIFICATION

- 4.1 The ISAF Sailor Classification Code will apply to teams in the Corinthian Trophy (see rule 79). Please refer to ISAF's Web site: www.sailing.org
- 4.2 Indicate classification for each sailor on the entry form if entering for the Corinthian Trophy and the unique ISAF User ID Number.
- 4.3 The closing date for the registration of Corinthian entries shall be as in NOR 3.4.
- 4.4 Sailors shall be registered with ISAF prior to the date identified in NOR 3.4 and be able to declare their User ID number when entering.
- 4.5 Late entries will not be considered for this trophy.
- 4.6 Classification will be checked at registration. A final list will be published at the close of registration.
- 4.7 Protests regarding ISAF classification shall be submitted by the end of the protest time limit on the first day of racing for the championship.
- 4.8 Full details for the Corinthian Trophy can be found in IMCA Championship rules.

5. FEES

- 5.1 The Entry Fee will be € 850. This Entry Fee includes launching at commencement and recovery at conclusion of the Regatta at designated times, berthing for the event, trailer storage, and tickets to the principal events for all competing crewmembers. Principal events will include Opening Ceremony, mid-week Gala Dinner and Closing Ceremony.
- 5.2 Entry fees may be made by bank transfer to the Dutch Melges 24 Class Association. Credit Card payment will not be accepted. Entries will not be valid until payment is received and confirmed by the OA.

Bank Details are as follows:

The Bank name is: ING Bank N.V.

IBAN/SEPA number: NL18INGB0006022814

BIC number: INGBNL2A

Att. Dutch Melges 24 Class Association

Residence: Goes

6 QUALIFYING SERIES AND FINAL SERIES

- 6.1 When there are more than 100 boats registered, the race committee may decide to divide fleet into two fleets. The regatta will then consist of a qualifying series and a final series.
- 6.2 If a qualifying series and a final series are held, the following will apply:
 - 6.2.1 Maximum of three (3) races a day may be sailed with a maximum of twelve (12) races for the regatta.
 - 6.2.2 The regatta will consist of a qualifying series of a maximum of six (6) races, followed by a final series of a maximum of six (6) races.
 - 6.2.3 For the qualifying series, the race committee will divide the competitors into four groups of as nearly equal size as possible, which will sail in alternating combinations.
 - 6.2.4 Based on the results of the qualifying series, the fleet will be divided into a Gold Fleet and a Silver Fleet for the final series.

6.2.5 Competitors will be informed in which group they will sail their qualifying series by the close of registration.

7. SCHEDULE

7.1

Day	Date	Event	Time
Thursday	15 August	Registration, crew weigh-in & measurement	1000 -1800
Friday	16 August	Registration, crew weigh-in & measurement	1000 -1800
Saturday	17 August	Registration, crew weigh-in & measurement Practice racing All boats afloat *Opening ceremony / Competitors briefing at Radboud Castle	1000 -1800 Warning signal at 1100 1730 1830
Sunday	18 August	Competitors briefing Racing Daily Awards	0815 Warning signal at 1030 15 min after drop of flag B
Monday	19 August	Competitors briefing Racing Daily Awards	0815 Warning signal at 1030 15 min after drop of flag B
Tuesday	20 August	Competitors briefing Racing Daily Awards *Gala Dinner at Regatta Center	0815 Warning signal at 1030 15 min after drop of flag B 1830
Wednesday	21 August	Competitors briefing Racing Daily Awards	0815 Warning signal at 1030 15 min after drop of flag B
Thursday	22 August	Racing No warning signal after 1430 *Closing Ceremony and Awards Presentation Dutch Fish/Chips dinner Regatta Center	Warning signal at 1030 1430 As soon as possible after drop of flag B

* - Principal Events, included with entry fee (see NOR 5.1)

7.2 Twelve (12) Races are scheduled for the European Championships.

OR

If there are more than 100 boats and the fleet is split, twelve (12) races are scheduled. If there are less than 100 boats and boats race as one fleet, ten (10) races are scheduled

7.3 The OA and/or the race committee reserve the right to modify the programme due to weather conditions or other causes.

8. MEASUREMENTS

8.1 Each boat shall produce a valid measurement certificate before the close of registration at 1800 on 17 August 2013.

8.2 The OA may weigh, measure or inspect any boat and/or her equipment and sails before, during or after the races.

8.3 Registration of sails and limitation stamping will take place during periods stated in NOR 7.1. Sails shall be measured and stamped by an approved measurer before arrival at the regatta. THERE WILL BE NO FACILITIES FOR INITIAL MEASUREMENT!!

8.4 In accordance with rule G3, a boat chartered or loaned for this event may carry national letters or a sail number in contravention of the class rules.

- 8.5 During the regatta, checks on conformity with class rules, including measurement requirements, may be performed at any time
- 8.6 A boat will provide a minimum of two people to facilitate measurement.

9. SAILING INSTRUCTIONS

- 9.1 The Sailing Instructions will be available at registration.
- 9.2 They will be posted on the event web site at www.melges24europeans13.com. when available.

10. VENUE

- 10.1 Attachment 'A' shows the location of the regatta harbour and the regatta center Medemblik.
- 10.2 Attachment 'B' shows the location of the racing areas.

11. THE COURSES

- 11.1 The course to be sailed will be windward-leeward.
- 11.2 Spreader/offset marks and leeward gates will be used.

12. PENALTY SYSTEM

- 12.1 Rule 44.1 is changed so that the Two-Turns Penalty is replaced by the One-Turn Penalty, except that if the penalty is given afloat by the jury it shall be a Two-Turns Penalty. This changes rule 44.1
- 12.2 Appendix P (Special Procedures for Rule 42) shall apply. Rule P2.3 will not apply and rule P2.2 is changed so that it will apply to any penalty after the first one. This changes rule Appendix P.
- 12.3 Decisions of the international jury will be final as provided in rule 70.5.

13. SCORING

- 13.1 Single Fleet
 - 13.1.1 Five (5) races are required to be completed to constitute a series.
 - 13.1.2 When fewer than six (6) races have been completed, a boat's series score will be the total of her race scores.
 - 13.1.3 When six (6) or more races have been completed, a boat's series score will be the total of her race scores excluding her worst score.
- 13.2 Split fleet scoring, if needed, will be described in the sailing instructions.

14. SUPPORT BOATS

- 14.1 All support boats shall clearly display the 3 letter national code of their ISAF Member National Authority at all times while afloat. The minimum height for the letters shall be 200 mm.
- 14.2 The IMCA Coach and Support boat appendix shall be in operation and is attached to this NOR.

15. LAUNCHING AND BERTHING

- 15.1 Cranage will be available at the following times:

Day	Date	Event	Time
Thursday	15 August	Cranage	1000-1800
Friday	16 August	Cranage	1000-1800
Saturday	17 August	Cranage	1000-1800

- 15.2 All boats are to be afloat by 1800 hours on Saturday 17 August 2013.
- 15.3 Boats shall be kept at the assigned berths in the harbour. Fenders and mooring lines will be required.
- 15.4 Bow numbers will establish the priority or order of berthing assignments, haul out order, and other items at the discretion of the OA.

16. HAUL-OUT RESTRICTIONS

Boats shall not be hauled out during the regatta except with and according to the terms of prior written permission of the race committee.

17. DIVING EQUIPMENT AND PLASTIC POOLS

Underwater breathing apparatus and plastic pools or their equivalent shall not be used around boats between the preparatory signal of the first race and the end of the regatta.

18. RADIO COMMUNICATION

- 18.1 Except in an emergency, a boat shall neither make radio transmissions while racing nor receive radio communications not available to all boats. This restriction also applies to mobile telephones.
- 18.2 Race information will be given on VHF Channel 13.

19. PRIZES

19.1 Prizes will be given as follows:

<u>Single Fleet</u>	Open Division		Corinthian Division	
Daily Prizes	Winner of each individual race Current series leaders – 1st, 2nd and 3rd (excluding final day)		Winner of each individual race Current series leaders – 1st, 2nd and 3rd (excluding final day)	
Overall Prizes	Prizes for winning helmsman and each crew member for the top five boats		Prizes for winning helmsman and each crew member for the top five boats	
<u>Split Fleet</u>	Open Division		Corinthian Division	
Daily Prizes –Races 1 to 6	Winner of each individual race in fleet A Current series leaders – 1st, 2nd and 3rd	Winner of each individual race in fleet B	Winner of each individual race in fleet A Current series leaders – 1st, 2nd and 3rd	Winner of each individual race in fleet B
Daily Prizes –Race 7 – 12	Winner of each individual race in Gold Fleet Current series leaders – 1st, 2nd and 3rd (excluding final day)	Winner of each individual race in Silver Fleet	Winner of each individual race in Gold Fleet Current series leaders – 1st, 2nd and 3rd (excluding final day)	Winner of each individual race in Silver Fleet
Overall Prizes	Prizes for winning helmsman and each crew member for the top five boats overall/in the Gold Fleet	Prizes for winning helmsman and each crew member for the top five boats in the Silver Fleet	Prizes for winning helmsman and each crew member for the top three Corinthian boats	Prizes for winning helmsman and each crew member for the top three Corinthian boats in the

			overall/in the Gold Fleet	Silver Fleet
--	--	--	---------------------------	--------------

- 19.2 Additional prizes may be given at the discretion of the OA.
 19.3 The overall championship will be the winner of the open division and awarded the Melges 24 European Championship Trophy.
 19.4 The winner of the Corinthian Division will be awarded the Melges 24 European Corinthian Trophy.

20. DISCLAIMER OF LIABILITY

Competitors participate in the regatta entirely at their own risk. See rule 4, Decision to Race. The OA will not accept any liability for material damage or personal injury or death sustained in conjunction with or prior to, during, or after the regatta. Liability waivers shall be signed by all competitors during registration.

21 INSURANCE

Each participating boat shall be insured with valid third-party liability Insurance with a minimum cover of € 1,500,000 per incident or the equivalent.

22 TELEVISION & PHOTOGRAPHERS' RIGHTS

Competitors give absolute right and permission for video footage or photographs of themselves or their boat to be published in any media for press, editorial or advertising purposes.

23 CHANGES TO THE NOTICE OF RACE

The OA may change the Notice of Race; see rule 89.2(a). Any such changes will be posted on the regatta web site, www.melges24europeans13.com

24 FURTHER INFORMATION

For further information please contact: Frank Lieve (frank.lieve@planet.nl) or www.melges24europeans13.com

ATTACHEMENT 1

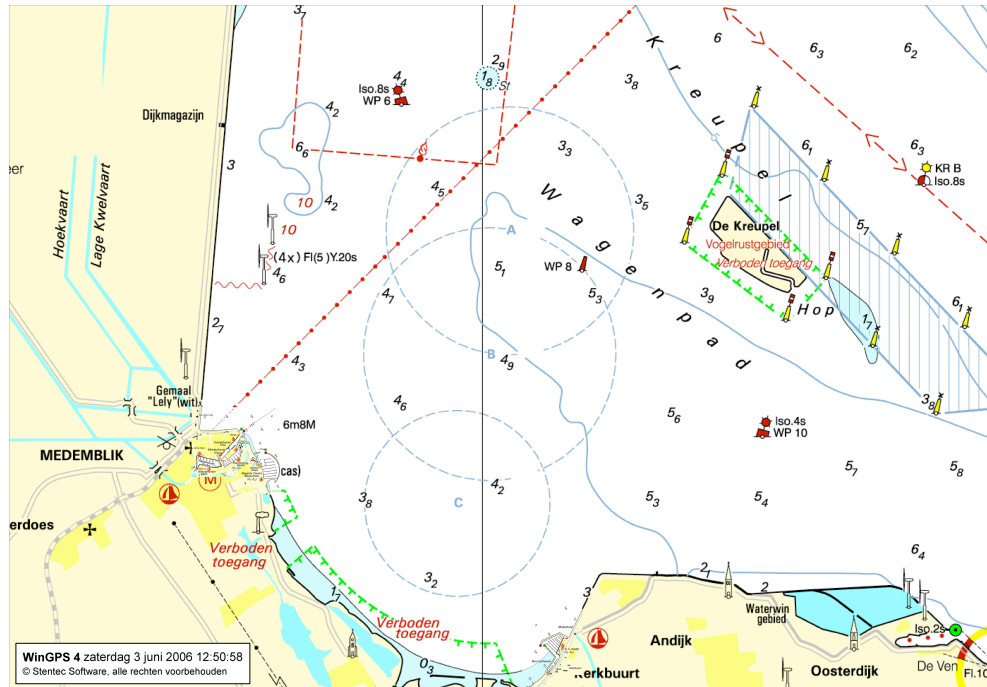


Route to harbour Regatta Center Medemblik

Medemblik is a medieval town, with some very small roads. In order to restrict the traffic inconvenience for the people of Medemblik, please start following the white road signs to the recreation site

"Vooroever" (later on follow: harbour Regatta Center Medemblik) *before* entering the town of Medemblik.

ATTACHEMENT 2



ATTACHMENT 3

COACH, SUPPORT, PRESS & SPECTATOR BOATS

COACH AND SUPPORT BOATS

1. Coach and support boats shall register with the race office during registration. They shall declare which boat or boats they are attached to.
2. Coach and support boats shall display a flag, or other identification symbol, as may be required by the race committee.
3. No coach boat or support boat shall pass information in any way to a boat that is racing. Rule 41. Infringements of this will be taken very seriously.
4. Coach and support boats shall communicate only with the boats they are registered to, and only by means of voice between races. Closed VHF or mobile telephone communication is prohibited.
5. All Melges 24 boats shall proceed to the racing area under their own power.
6. There shall be no transfer of any goods or equipment until after the finish of the last race of the day between Melges 24's and their coach or support boats.
7. Coach and support boats shall not go alongside their Melges 24's until after the finish of the last race of the day.
8. Coach and support boats shall keep clear of the racing area at all times during racing.
9. Any coach or support boat that interferes with another competitor or the racing in any way, including creating excess wash, or hinders an official boat carrying out its duties shall have the competitor(s) to which they are attached, liable to a penalty at the discretion of the jury.
10. Any competitor may protest under this attachment.
11. The penalty given by the jury is at their discretion, but shall be applied to the overall score and therefore not discarded.

PRESS AND SPECTATOR BOATS

1. All Press and official spectator boats shall be registered by the race organising authority during registration.
2. Press and spectator boats shall display any flag, or other identification symbol as may be required by the race committee.
3. The race organisers may appoint one or more photo boats, which will be allowed within the race course. The position of these boats shall not be grounds for redress.
4. Press and spectator boats shall not interfere with the racing in anyway and shall stay at a distance outside the racecourse where their wake causes no problem.